



# GAT MONTHLY MEMBERSHIP PROGRESS REPORT

Results as of: 6/30/2023

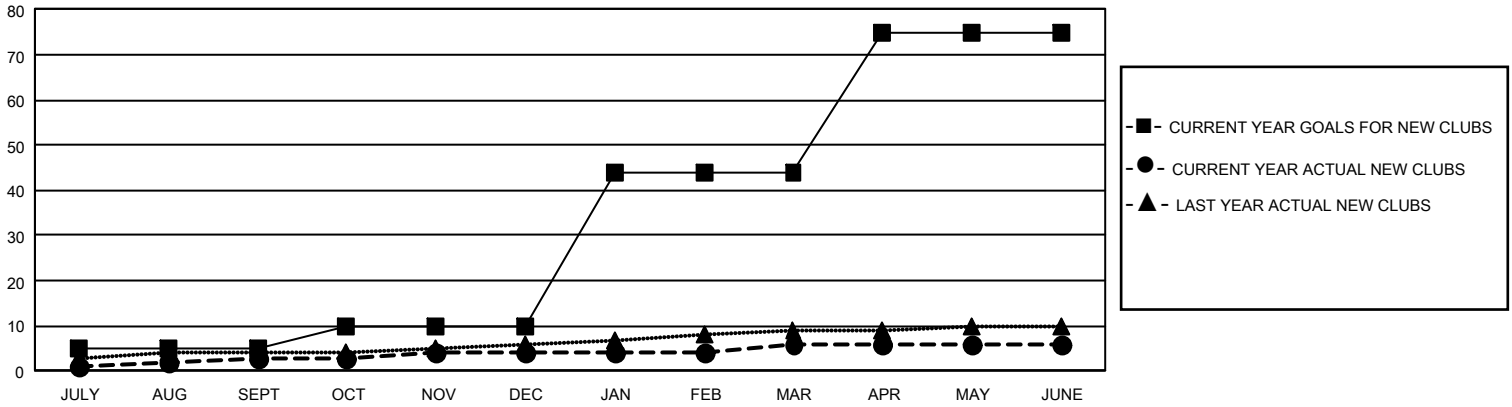
## GMT Constitutional Area 5 - K, Group M

REPORT DOES NOT INCLUDE CLUBS IN UNDISTRICTED AREAS.

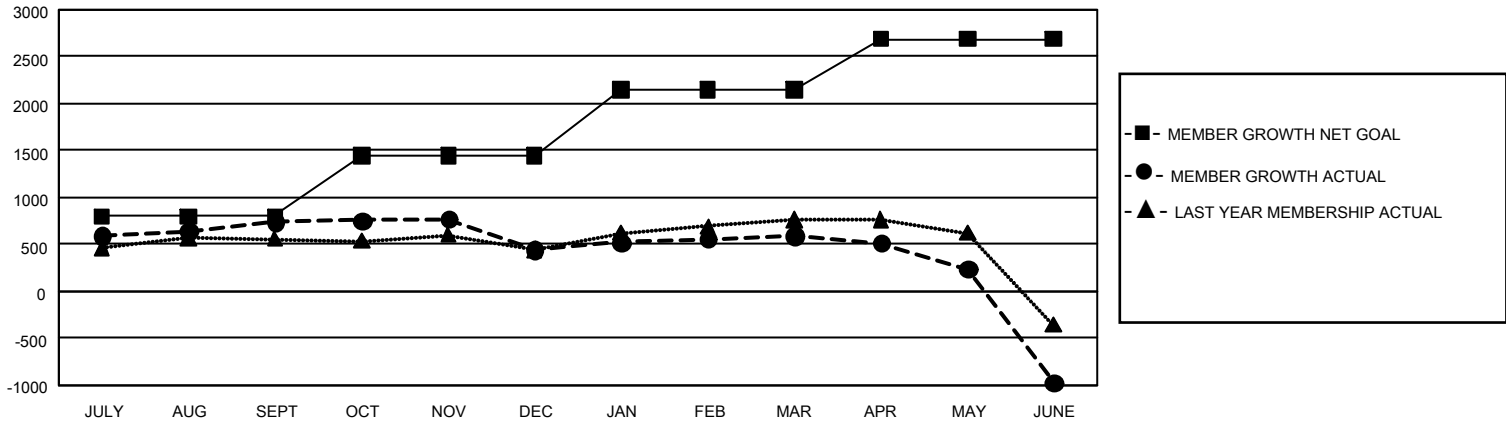
Clubs			
RESULTS FOR 2022-2023			
QUARTER	NEW CLUB GOAL	NEW CLUBS	DROPPED CLUBS
JULY/AUG/SEPT	15	3	2
OCT/NOV/DEC	15	1	1
JAN/FEB/MAR	102	2	1
APR/MAY/JUNE	93	0	7

Members			
RESULTS FOR 2022-2023			
QUARTER	MEMBER GROWTH NET GOAL	MEMBER GROWTH ACTUAL	DROPPED MEMBERS ACTUAL (including transfers)
JULY/AUG/SEPT	795	1,439	641
OCT/NOV/DEC	650	497	780
JAN/FEB/MAR	703	509	332
APR/MAY/JUNE	538	363	1,886

GOALS AND ACTUAL NEW CLUBS CUMULATIVE



GOALS AND ACTUAL MEMBERS CUMULATIVE



<b>DROPPED CLUBS: 11</b>	<b>483 CLUBS OF 608 ADDED 1 OR MORE NEW MEMBERS</b>	<b><u>GENDER DISTRIBUTION</u></b>	
		MALE 17,063 (80.16%) FEMALE 4,224 (19.84%) NON BINARY 0 (0.00%) PREFER NOT TO ANSWER 0 (0.00%)	
<b><u>DROPPED MEMBERS</u></b>		<a href="#">CLICK HERE FOR CUMULATIVE MEMBERSHIP DATA</a>	TOTAL FAMILY UNIT MEMBERS 715
DECEASED 85 CLUB CANCELLED 84 OTHER 3,470 <b>TOTAL 3,639</b>			FAMILY MEMBERS PAYING HALF DUES 406